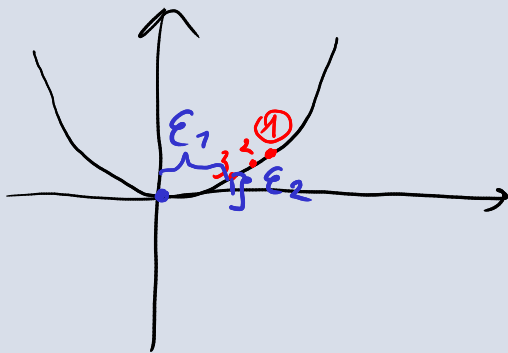
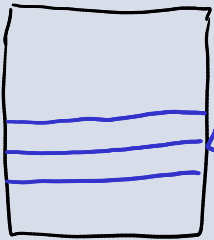


Критерии остановки:

- 1)  $i = i_{max}$
- 2)  $|x_i - x_{i-1}| > \epsilon_1$
- 3)  $|y_i - y_{previous}| > \epsilon_2$



$z_{max}$



$V \rightarrow L$

$L_0 : V_0$

$L_1 : V_1$

$L_2 : V_2$

$V_0 > V \Rightarrow z_{max,1} = L_0$

$V_1 < V \Rightarrow z_{min,2} = L_1$

$V_2 \approx V$

$|V_2 - V| \leq \epsilon_1 \quad \checkmark$

$|L_2 - L_1| \leq \epsilon_2 \quad \times$

$z_{max,1}$

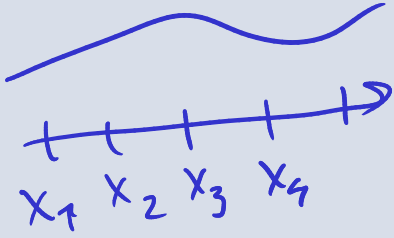
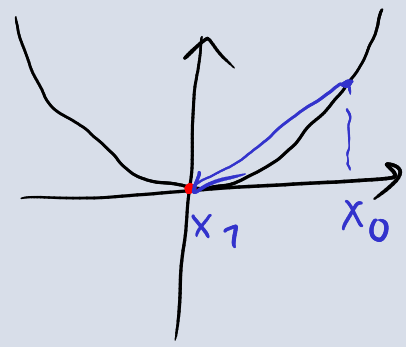
$z_{min,2}$

$z_{min}$

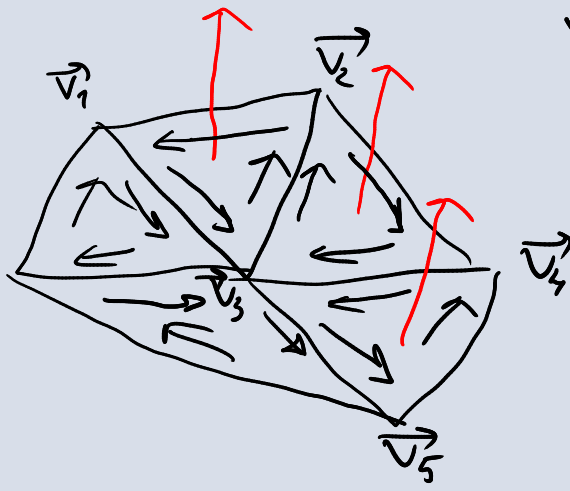
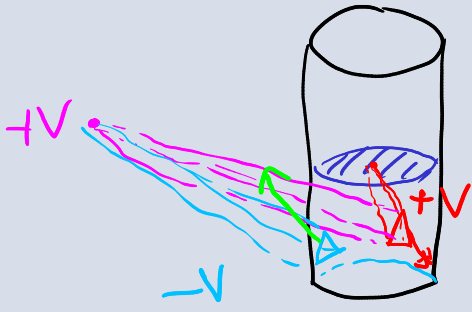
$L_0$

$L_1$

$L_2$



$$f'_i \approx \frac{f_{i+1} - f_i}{\Delta x}$$



$V_1$   $V_3$   $V_2$   
 $V_3$   $V_2$   $V_4$   
 $V_4$   $V_3$   $V_5$



